



SAILING INSTRUCTIONS

SOVEREIGNS CUP SUPPORTED BY



1. ORGANISING AUTHORITY

- 1.1** The organising authority for the Sovereign's Cup Regatta is Kinsale Yacht Club.
1.2 The Regatta will be sailed from Kinsale Yacht Club from Wednesday the 22nd June 2011 to Saturday the 25th June 2011.
1.3 Race Headquarters will be at the Race Office, Kinsale Yacht Club, Kinsale, Co. Cork.
1.4 The Official Notice Board will be situated in the window near the Race Office.
1.5 All competitors will be honorary members of Kinsale Yacht Club for the duration of the event

2. RULES AND HANDICAP SYSTEMS

2.1 The regatta will be governed by the Racing Rules of Sailing (RRS) of the International Sailing Federation (ISAF), the prescriptions of the Irish Sailing Association (ISA), the 2011 IRC rating rule, relevant class rules where applicable, The Progressive Handicap System, the ISAF /OSR Safety Regulations Category 4 (less storm sail requirement), The White Sail Rules, the Notice Of Race and these Sailing Instructions and any amendments thereto.

2.2 ISAF Offshore Special Regulations Category 4 shall apply and shall not be used for boat-to-boat protests – this amends RRS 60.1. Vessels that have pulpits aft of the headstay, but comply with SR 3.14.3 (A) in all other respects and also with relevant ISO standards, may on written application be granted a dispensation for the requirement that the pulpit be forward of the headstay. Boats that do not comply with SR 3.08.1 shall label such hatches "not to be opened at sea".

The following exceptions to Category 4 shall also apply:

- Navigation Lights, Section 3.2
- Flashlights(s), Section 4.07
- Yacht's Name, Section 4.17
- Marine Grade Retro Reflective Material, Section 4.18
- Storm and Heavy Weather Sails, Section 4.26
- 3.27,4.12, 4.13, and 4.23

2.3 Boats shall not race with their anchor projecting over the bow.

2.4 The Organising Committee reserves the right to inspect any competitor's boat, at any time to ensure it complies with the Rules as mentioned in 2.2 and 2.3 above.

2.5 ECHO handicaps may be revised during the Regatta by the handicapping authority for the event. The act of handicap adjustment or failure to adjust will not be grounds for redress. This amends RRS 60.1.

2.6 A boat that meets all the requirements of class 0 or class 1 Restricted and fills out a declaration to that effect, will be scored accordingly. Declaration forms are available at the Race Office

2.7 Revised Progressive handicaps will be published before 09.00 hrs in the morning prior to their implementation.

2.8 All competitors in the IRC fleets shall have IRC Certificates. All IRC Certs must be endorsed, except that competitors in the White Sail IRC fleet **need not** have endorsed certificates.

2.9 No crew limits shall apply except as required by class rules

3. REGISTRATION AND ELIGIBILITY

3.1 All boats shall register with the Race Office not later than 1900 on Tuesday 21st June. Any amendments to the SI's or race programme may be issued then

3.2 The validity date for IRC Certificates shall be on or before Tuesday 14th June. No alteration of a boats certificate will be accepted after this date except as a result of a rating protest or to correct a rating error. In exceptional circumstances a later validity date may be accepted by the Organising Committee.

3.3 To be eligible to race in the Quarter ton Fleet, 'the boat has to have had, or a sistership has to have had an IOR rating of between 16.5 and 18.5 and be built pre 1996.

4. NOTICES TO COMPETITORS

4.1 Notices to competitors shall be posted on the Official Notice Board located in the window of the Race Office

4.2 Skippers Briefing will be held at 2000Hrs on Tuesday 21st June at

KYC

5. CHANGES TO SAILING INSTRUCTIONS

5.1 Any changes to Sailing Instructions will be posted before 0930 on the day it is to take effect and indicated by ICF 'L' flown from the club mast.

6. SIGNALS ASHORE

6.1 Signals made ashore will be displayed off the main KYC mast on the balcony and posted on the Official Notice Board

6.2 When the AP is displayed ashore, '1 minute' is replaced with 'not less than 60 minutes' in the race signal AP

7. CLASSES

7.1 likely Class Divisions based on ECHO and/or IRC are as follows:

CLASS 0	1.055 and above	pennant 0
CLASS 1	0.980 to 1.054	pennant 1
CLASS 2	0.921 to 0.979	pennant 2
CLASS 3/ Quarter Ton	0.860 to 0.920	pennant 3
CLASS 4	0.859 and below	pennant 4
CLASS 5	White Sail IRC	pennant 5
White Sail 1	TBC	WS pennant and pennant 1
White Sail 2	TBC	WS pennant and pennant 2

7.2 The Regatta Committee may, in its absolute discretion, assign a boat to any class.

7.3 All boats shall wear their appropriate class flags while racing.

7.4 Boats must show their correct sail numbers. RRS 77 shall not apply.

7.5 Permission to sail under any other number must be sought from the Race Office or OOD before commencement of the race concerned and must be notified in writing to the Race Office on arrival ashore.

7.6 All boats must ensure that the finishing vessel can read their sail numbers.

8.0 RACE PROGRAMME

Class	Day 1	Day 2	Day 3	Day 4
Class 0	Coastal Centre Point	WL x 2 Sovereigns	RTC x 2 Centre Point	WL x 2 Sovereigns
Class 1	Coastal Centre Point	WL x 2 Sovereigns	RTC x 2 Centre Point	WL x 2 Sovereigns
Class 2	WL x 2 Sovereigns	Coastal Centre Point	WL x 2 Sovereigns	RTC x 2 Centre Point
Class 3/ Quarter Ton	Coastal Old Head	WL x 2 Old Head	RTC x 2 Old Head	WL x 2 Old Head
Class 4	Coastal Old Head	WL x 2 Old Head	RTC x 2 Old Head	WL x 2 Old Head
Class 5	WL x 2 Sovereigns	Coastal Centre Point	WL x 2 Sovereigns	RTC x 2 Centre Point
White Sail 1	RTC Charles Fort	Coastal Charles Fort	RTC Charles Fort	RTC Charles Fort
White Sail 2	RTC Charles Fort	Coastal Charles Fort	RTC Charles Fort	RTC Charles Fort

*RTC= Round the Cans *WL = Windward Leeward

8.1 The Regatta will comprise a total of up to 7 races for each class, except White Sail 1 and White Sail 2 who shall have 1 race per day. In all classes except WS1 and 2, two races will be sailed each day except when a coastal race is scheduled.- Coastal races where sailed will count for double points.

8.2 White Sail 1 and White Sail 2 shall have one long race per day.

8.3 The PRO may at his discretion run 2 round the cans races instead of the Coastal course, which may be rescheduled. This will be announced by VHF and displayed on the blackboard on the Committee Boat

8.4 The decision to run more than 2 races per day is at the discretion of the PRO. This will be announced by VHF and displayed on the blackboard on the Committee Boat

8.5 On the last day of the regatta no warning signal will be made after 15:00

8.6 Note: Classes 3,4 and Quarter Tonners stay with the same PRO/Committee Boat for the duration of the event with starts in the vicinity of the Old Head.

9. COURSES and VHF Channels

WINDWARD LEEWARD Sovereign Islands VHF 69

First Gun 1055

Committee Boat 'HARPY' Aquastar 43 Race area south of Sovereign Islands

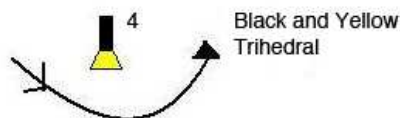
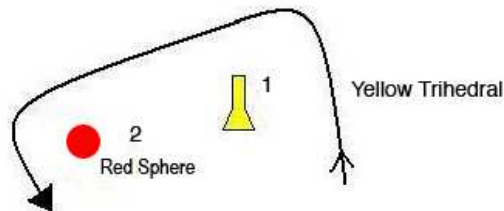
The course for each class will be indicated on a blackboard on the starting vessel prior to the start and may also be announced on VHF Ch. 69

All marks to be rounded to PORT. , except start and finish line

Course A	Start - 1 - 2 - 3 - 1 - 2 - 3 - 1 - 2 - 3 - Finish
Course B	Start - 1 - 2 - 4 - 1 - 2 - 4 - 1 - 2 - 4 - Finish
Course C	Start - 1 - 2 - 3 - 1 - 2 - 3 - Finish
Course D	Start - 1 - 2 - 4 - 1 - 2 - 4 - Finish

In the event the windward mark has to be moved, the wing mark may not be relaid

Course 2:



WINDWARD LEEWARD Old Head

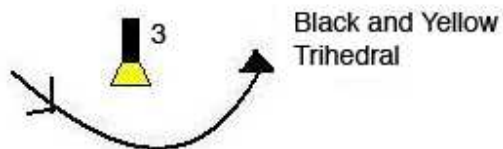
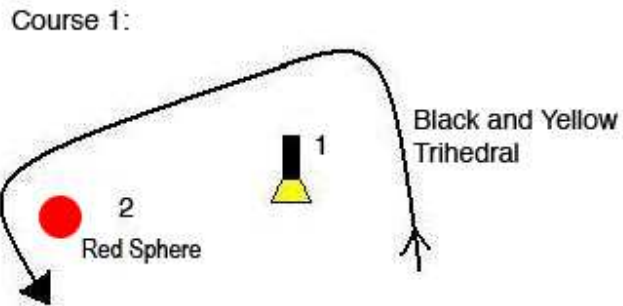
VHF 72

First Gun 1055

Committee Boat 'SpareTime' (42 foot trawler yacht) OD Peter Crowley

Race area near Old Head

Course Start - 1 - 2 - 3 - 1 - 2 - 3 - Finish



In the event the windward mark has to be moved, the wing mark may not be relaid

ROUND THE CANS and COASTAL COURSES CENTRE POINT	VHF 68
--	---------------

First Gun 1055

Committee boat : ARUN 52 lifeboat 'Samuel J' OD. Jack Roy and Jeanot Petch

Start in vicinity of Centre point

NOTE: At the discretion of the PRO a windward mark may be laid to windward of the start. This mark, if laid, shall be a red sphere or dan buoy and its position will be announced on the VHF and by blackboard

The course for each class will be indicated on a blackboard on the starting vessel prior to the start and may also be announced on VHF Ch 68.

ROUND THE CANS AND COASTAL COURSES FOR WHITE SAIL 1 and 2	VHF 77
--	---------------

First Gun 1155

Committee boat Grand Banks 32 'Destiny' PRO Donal Hayes Charles Fort start line

VHF Channel 77 one race per day First gun 1155

Marks as per attached chartlet

ROUND THE CANS AND COASTAL COURSES FOR CLASSES 3,4 AND QUARTER TON

VHF 72

Committee boat Motor Cruiser 'Sparetime' Start line vicinity of Old Head

First Gun 1055 VHF Channel 72

Marks as per attached chartlet

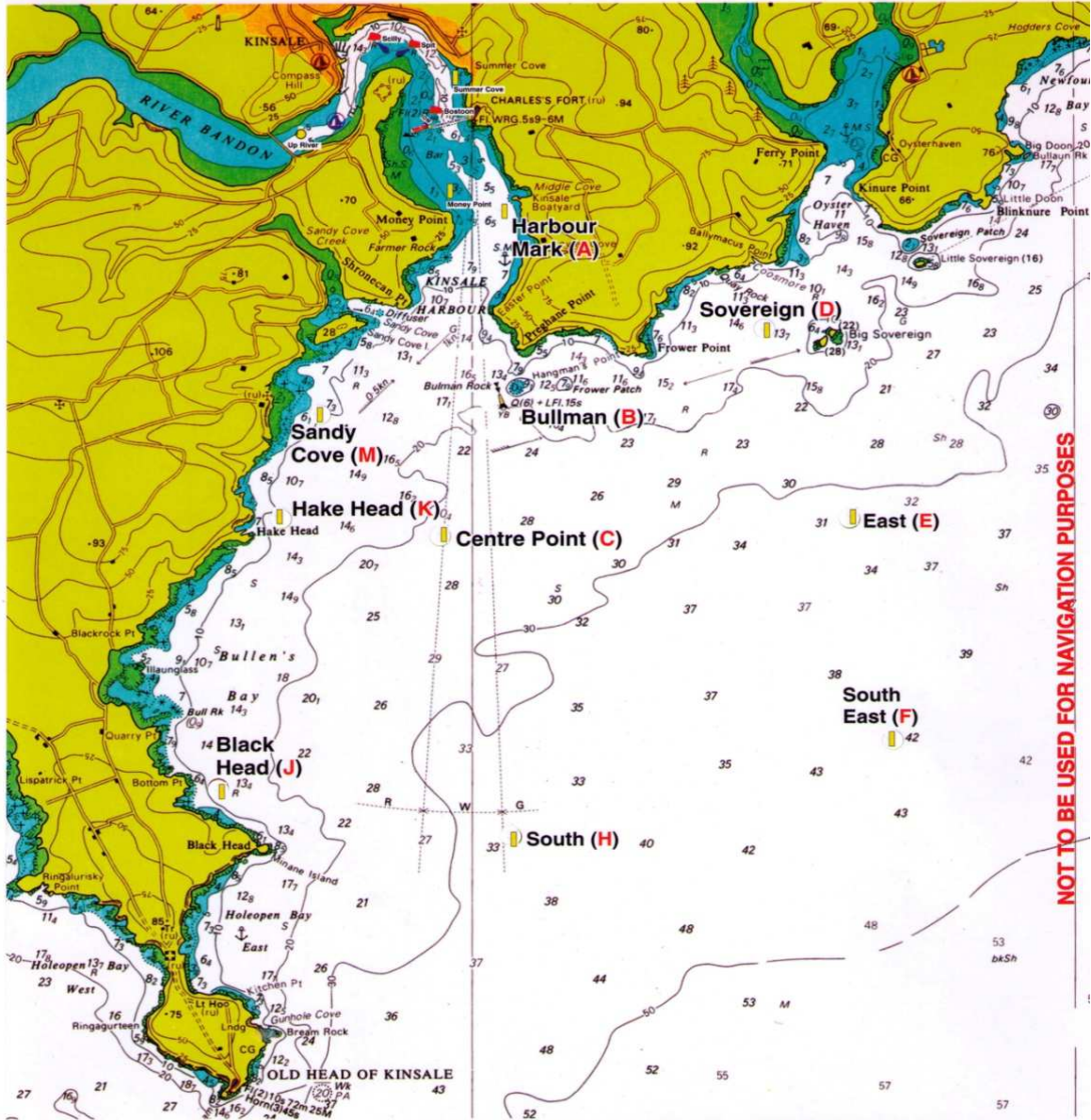
NOTE: At the discretion of the PRO a windward mark may be laid to windward of the start. This mark, if laid, shall be a red sphere or dan buoy and its position will be announced on the VHF and by blackboard

The course for each class will be indicated on a blackboard on the starting vessel prior to the start and may also be announced on VHF Ch 72.



Kinsale Yacht Club

RACING MARKS



NOT TO BE USED FOR NAVIGATION PURPOSES

KINSALE YACHT CLUB RACING MARKS APPROX. POSITIONS

 YELLOW PENCIL	Harbour Mark (A)	51.41.19N	08.29.74W	Bulman (B)	51.40.12N	08.29.70W
	Centre Point (C)	51.39.40N	08.30.25W	Sovereign (D)	51.40.56N	08.27.51W
	East (E)	51.39.50N	08.26.90W	South East (F)	51.38.23N	08.26.42W
	Hake Head (K)	51.39.48N	08.31.58W	South (H)	51.37.70N	08.29.60W
	Black Head (J)	51.38.00N	08.32.15W	Sandy Cove (M)	51.40.10N	08.31.25W

NOTE: The visibility of the Yellow pencil marks may be enhanced by a dayglo top section

The following marks may be used in addition to the KYC racing marks,

Black Tom Starboard Hand Mark, 51°36.414'N 8°37.914'W

Daunt Rock, 51°43.545'N 8°17.660'W

Cork Buoy, 51°42.918'N 8°15.59'W

10. STARTING

10.1 The **STARTING** vessel will be identified by **ICF 'R'** (Round the cans and coastal course), or **'W'** (Windward/Leeward). An inner limit mark MAY be laid off the starting vessel; If laid, no boat shall pass between this mark and the starting vessel after the preparatory signal.

10.1a Races will be started in accordance with Rule 26 with the warning signal made 5 minutes before the starting signal

10.2 Starting lines will be between a **red and white pole** on the starting vessel and **an adjacent mark/dan buoy ODM** at the **port end of the line**. The starting line for the White sail Fleet shall be the Charles Fort Line.

10.3 The **Charles Fort start line** shall be between a red and white pole on the Committee Boat and the lighthouse on the southwest corner of Charles Fort. An inner limit (dayglo sphere) mark may be laid. If laid no boat shall pass between this mark and the Committee Boat.

10.4 Classes whose warning signal has not been made shall keep clear of the starting area.

10.5 A boat starting later than 5 minutes after her starting signal shall be scored DNS

10.6 The order of class starts shall be as follows

Class 1 and 0 may start together and sail the same courses first gun 1055

Class 2 may start first followed by Class 5 first gun 1055

Class 3,4 and Quarter Ton may start together and sail the same courses first gun 1055

WS 1 may start first followed by WS 2 off the Charles Fort Line first gun 1155

10.7 Race officers may change this sequence at their discretion. Any changes will be announced by VHF. And signalled by flags.

11. Change of course after the start

11.1 A change in course after the start will be signaled in accordance with RRS 33

11.2 A vessel flying flag 'F', making continuous sound signals, at any rounding mark means that the course is shortened and boats shall round that mark and proceed directly to the finishing line. This is in addition to RRS 32 and race signals

12. THE FINISH

12.1 The finishing line shall be between a red and white pole on the Committee Boat or Finishing Boat and a dan buoy finishing ODM

12.2 The **Charles Fort Finish** Line shall be between a red and white pole on the Committee Boat and a 'dayglo' sphere ODM

12.3 **Boats who have finished or are racing are asked to keep clear of boats finishing and not pass through any finishing line until finishing.**

13. TIME LIMITS -this amends RRS 35

13.1 The time limit for the WL and RTC courses is 2.5 hours or half an hour after the third boat finishes whichever is longer

13.2 The time limit for the Coastal Course is 1800 Local Time

14. PENALTIES

14.1 RRS 44 will not apply. **A boat that may have broken a rule of Part 2 of the RRS or RRS 31 (Touching a Mark) or 10.4 or 12.2 while racing may take a time penalty** unless she gained a significant advantage in the race or caused or caused serious damage to another boat whilst racing, in which case she shall retire. The penalty for infringement of 10.4 or 12.2 shall be 3% of a boats elapsed time and this shall be 1% for all other infringements.

14.2 When in the same incident a boat has broken a rule of Part 2 and touched a mark, she need take only one penalty.

14.3 A boat taking a time penalty under 14.1 shall

-display a code flag Q (yellow flag) from the first reasonable opportunity after the incident

continuously until 5 minutes after finishing and comply with the other parts of 14.3

- report her acknowledgement in person at the race office and identify the nature of the infringement (boat infringed against and/or mark touched etc) to the Protest Committee by the expiry of the protest time limit. The report shall be in a specific form available in the race office

14.4 When one boat in a protest has not already accepted a penalty in accordance with 14.3, and acknowledges prior to hearing, an infringement of a rule of Part 2 of the RRS or RRS 31 or 10.4 or 12.2, she shall receive a penalty of 3% of her elapsed time.

14.5. A boat that accepts a time penalty may protest with respect to the same incident but her penalty will not be affected

14.6 A boat that takes a penalty shall not be penalised further with respect to the same incident unless she failed to retire when 14.1 required her to do so.

14.7 The application of a time penalty shall not cause a boat to be scored as having finished outside to the time limit.

14.8 The level of penalties (other than time penalties specifically defined in these Sis) for infringements of rules shall be at the discretion of the Protest Committee and may be either disqualification, a time penalty or no penalty. This changes RRS 64.1

15. PROTESTS

- 15.1** Protest forms are available at the race office located in the KYC club house. Protests and requests for redress or reopening shall be delivered there within the appropriate time limit.
- 15.2** For each class, the protest time limit is 90 minutes after the last boat has finished the last race of the day.
- 15.3** A schedule of protests will be posted no later than 15 minutes after the protest time limit to inform competitors of hearings in which they are parties. Hearings will be held in the protest room, located at the KYC club house, beginning as soon as possible.
- 15.3a** It is the responsibility of the **PROTESTOR to inform the PROTESTEE** of the lodging of the protest, the likely time and place of the hearing and to supply him with a copy thereof. It is the responsibility of all parties thereafter to attend at the time and place of any hearing with all necessary witnesses. This amends RRS 63.2.
- 15.4** **In addition to the requirements under RRS 61, boats must draw the attention of the Committee Vessel to an intention to protest/take an alternative penalty as soon as possible after the finish and before leaving the finishing area.**
- 15.5** On the last scheduled day of racing a request for reopening a hearing shall be delivered
- (a) Within the protest time limit if the requesting party was informed of the decision on the previous day;
 - (b) No later than 30 minutes after the requesting party was informed of the decision on that day.
- 15.6** On the last scheduled day of racing a request for redress based on a protest committee decision shall be delivered no later than 30 minutes after the decision was posted. This changes rule 62.2.

16. Blank

17. SCORING SYSTEM AND DISCARDS

- 17.1** The scoring system for the regatta shall be the 'low points system' in accordance with Appendix RRS
- A4.1 **17.2** A discard system shall apply as follows:
- If six or more races are sailed, then one discard is allowed.
- 17.3** Results will be given under ECHO Progressive and IRC systems for all 'full sail' classes in the cruiser fleets
- 17.4** The ECHO Progressive Handicapping System will be used for White Sail Division 1 and 2. (See Appendix G.)
- 17.5** Results shall be given under the IRC system for IRC Class
- 17.6** The **Coastal Race**, where sailed, shall count for double points

18. RETIRING

A boat, which retires from a race, shall inform the Committee Vessel, a patrol vessel or the Race Office as soon as possible.

19. DECLARATIONS

All owners or their representatives shall sign a declaration sheet for each race by 1900hrs or within 2 Hrs of the finish of the race whichever is later on the day of racing. Failure to comply with this instruction may result in a scoring penalty of as outlined in Section 14 of these SIs, without a hearing, for races sailed that day. This amends RRS 63.1 and 64.1.

The declaration will require:

- a) Finishing Time
- b) The boats finishing immediately ahead and astern.
- c) Confirmation that they have sailed by the Racing Rules of Sailing

20.0 EQUIPMENT AND MEASUREMENT CHECKS

- 20.1 A boat or its equipment may be inspected by a regatta inspection team at any time for compliance with the sailing instructions. Failure to comply will result in disqualification from the days racing.

21.0 RADIO COMMUNICATIONS

- 21.1 Except in an emergency, competitors shall neither make radio transmissions while racing nor receive radio communications not available to all competing boats. This restriction also applies to mobile telephones.

21. DISCLAIMER OF LIABILITY

21.1 Kinsale Yacht Club, Members thereof, and any event Sponsor are providing this series of races only on the understanding that the Club, its' members or the Sponsor or its' representatives bear no responsibility whatsoever for any loss, damage or injury to any boat or person howsoever arising, directly or indirectly by any accident or wrongful or negligent act, default or omission of any person during the event.

21.2 It is the sole and exclusive responsibility of each owner or owner's representative to decide whether or not to start or continue to race. Owner's shall acknowledge their responsibility on the official Entry Form and draw the attention of their crew and associates to this disclaimer.

21.3 Boat owners and crew shall ensure that they are adequately insured against loss, damage or injury to persons, boats or equipment at all times and howsoever occurring.

22. Overall Trophies

22.1 The **Sovereign's Cup** will be awarded to the boat, who in the option of the Regatta Director has given the best performance under IRC of all competitors at the event.

22.2 The **Portcullis Trophy** will be awarded to the boat, who in the option of the Regatta Director has given the best performance under ECHO of all competitors at the event.

22.3 The **White Sail Trophy** will be awarded to the boat with the lowest points in the **White Sail Class**

22.4 The **Keanes Jewellers Quarter Ton Perpetual** Trophy will be awarded to the **Quarter Tonner** with the lowest overall points in IRC.

22.5 The **Michelle Dunne Prix D'Elegance** shall be awarded to the most elegant yacht

A mid-regatta prize-giving will take place in the marquee on Thursday 23rd June

The overall prize-giving will take place in the main yacht club bar on Saturday 25th June

APPENDIX G:

White Sail Division

White Sail Division Rules

1 White Sail Division competing boats **must** fly identifying racing pennant. (*White PENNANT with blue letter W thereon*). Plus identifying numeral pennant 1 or 2 if fleet is divided. White Sail IRC shall fly pennant no. 5

2 The starting Handicap shall be assigned by the Race Office broadly in line with the ECHO standard. No handicap certificates are necessary, except for boats competing in Class 5 IRC White Sail.

3 Each Boat shall have a minimum of two crew, there is no maximum number. (Skipper plus one other person complies with this rule.)

4 The use of Gennakers, Bloopers and Spinnakers or other purpose-built downwind sails **is prohibited**.

5 Spinnaker poles **are allowed** for poling out headsails.

6 Handicaps will be calculated using the **ECHO Progressive Handicapping System** for White Sail 1 and 2 and they will be adjusted and declared after each race.

7 Races and Scoring

There will be one race on each day of the Sovereign's Cup event for White Sail 1 and 2, giving a total of four races. The scheduled Coastal race shall be scored as two races. Class 5 shall have a total of seven races as per the Sailing Instructions

8 Depending on the number of entries the fleet may be divided into more than one division.

9 Discards: One discard is allowed from if all 5 races are scored. Discards for Class 5 as per SI's

11 Starts and finishes: Races may be started and finished from the Charlesfort line.

12 Yachts shall use only one headsail for the duration of the race. No changing of head sails or main sails allowed during racing, apart from reefing.

VHF Channels:

COURSE	VHF Ch
WINDWARD / LEEWARD Sovereign's	Ch 69
ROUND THE CANS Centre Point	Ch 68
QT/ CLASS 3,4 WINDWARD/LEEWARD Old Head	Ch 72
WHITE SAIL 1,2 Charles Fort	Ch 77
GENERAL COMMS	Ch 37